


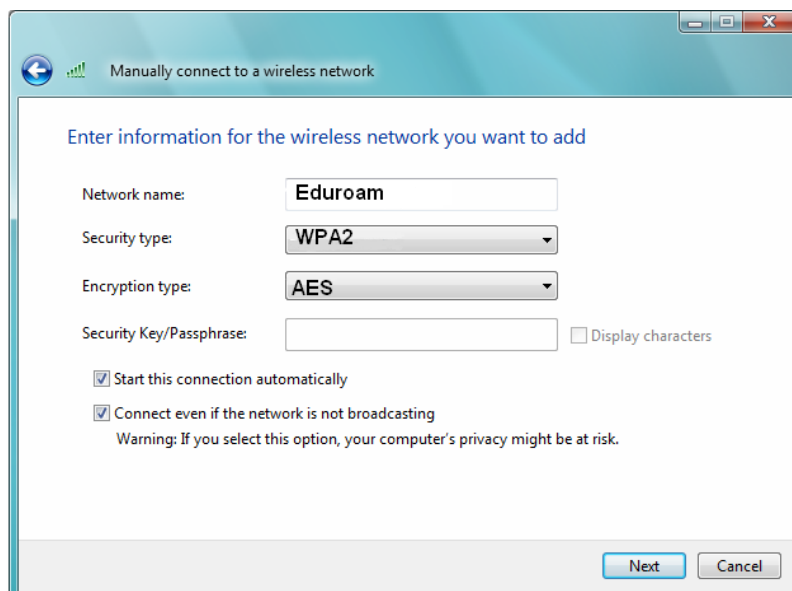
Windows VISTA

Regulations

Before connecting to the network, you should familiarise yourself with the regulations for computing use at the University of Greenwich. You are reminded that when using the University of Greenwich computing facilities you are bound by the: Regulations for the Use of Computing Facilities at the University of Greenwich. The full set of regulations can be viewed at: <http://www.gre.ac.uk/offices/ILS/ict/policies> while using the Janet Roaming service you are also bound to the JANET Acceptable Use Policy which can be found at: www.ja.net/services/publications/policy/aup.html



- Click on the Start icon  and select **Control Panel**
- Choose **Network and Sharing Center**
- Select **Manage Wireless Networks** from the list on the left
- Click **Add**
- Choose to **Manually Create a Network Profile**
- Add the Network name: **Eduroam**
- Choose the Security type: **WPA2**
- Choose the Encryption type: **AES**
- Make sure both boxes are ticked:
 - Start this connection automatically
 - Connect even if the network is not broadcasting



Manually connect to a wireless network

Enter information for the wireless network you want to add

Network name:

Security type:

Encryption type:

Security Key/Passphrase: Display characters

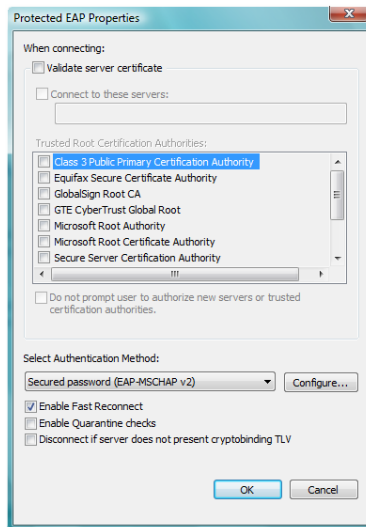
Start this connection automatically

Connect even if the network is not broadcasting

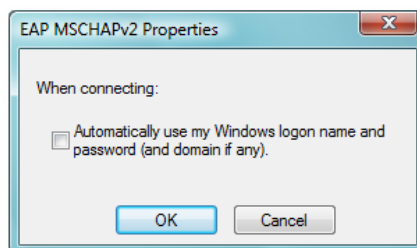
Warning: If you select this option, your computer's privacy might be at risk.

Next Cancel

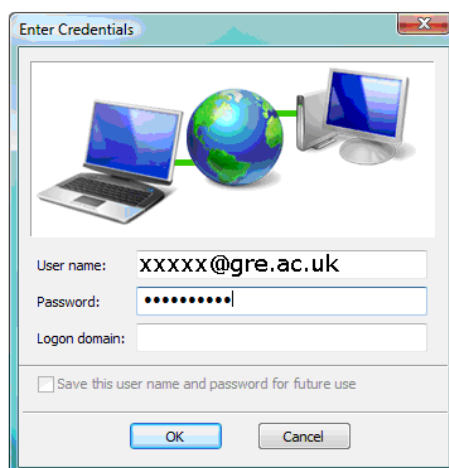
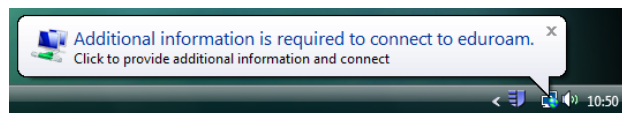
- Click **Next**
- It will tell you that it has **Successfully added Eduroam**. Now you need to click on **Change connection settings**
- Select the **Security** tab and click on **Settings**
- Untick **Validate Server Certificate**
- Tick **Enable Fast Reconnect**
- Select Authentication method: **Secured password (EAP-MSCHAP v2)**



- Click on **Configure**



- Untick **Automatically use my windows password ...**
- Click OK until you return to the **Manually connect to a wireless network** window
- Click on **Connect to ...**
- Select **Eduroam** as the network to connect to and click **Connect:**
- Click on the bubble **Additional information is required to connect to Eduroam**



- Type your own **University's Eduroam login details*** in the form of (eg ab123@xxx.ac.uk)
- Type your computer **login** password
- Leave the Logon Domain field blank
- Click **OK**. Your laptop should now authenticate your credentials and, if successful, gain network access.

**If you are unsure what username and password to use, you must contact your own University for help.*