

Windows XP

Regulations

Before connecting to the network, you should familiarise yourself with the regulations for computing use at the University of Greenwich. You are reminded that when using the University of Greenwich computing facilities you are bound by the: Regulations for the Use of Computing Facilities at the University of Greenwich. The full set of regulations can be viewed at: <http://www.gre.ac.uk/offices/ILS/ict/policies> while using the Janet Roaming service you are also bound to the JANET Acceptable Use Policy which can be found at: www.ja.net/services/publications/policy/aup.html

1. Right click on the **wireless network** icon in the system tray and select **View available wireless networks**
2. Select the '**Eduroam**' SSID and click **Connect** (*this attempted connection will fail, but it will ensure that Windows is aware that the network exists*).
3. Select **Change advanced settings**
4. Select the **Wireless networks** tab
5. Select the '**Eduroam**' SSID from **preferred networks**
6. Click on **Properties**, which will open a **Eduroam properties** window with the **Association** tab selected.
7. Set **Network authentication** to **WPA2**
8. Set **Data Encryption** to **AES**
9. Ensure that **Key is provided for me automatically** is ticked.
10. Select the **Authentication** tab.

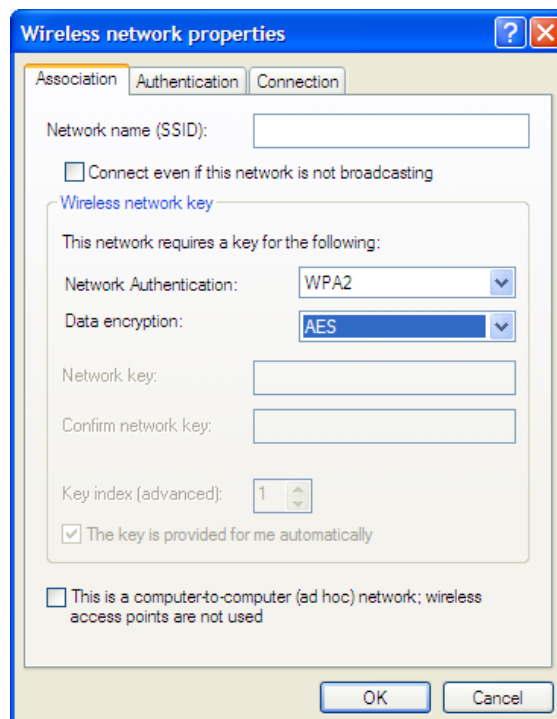


Figure 1 - Screen appearance at step 9.

11. Ensure that **Enable IEEE 802.1X authentication** for this network is ticked.
12. Set the **EAP Type** to **Protected EAP (PEAP)**
13. Deselect **Authenticate as computer** and **Authenticate as guest**.

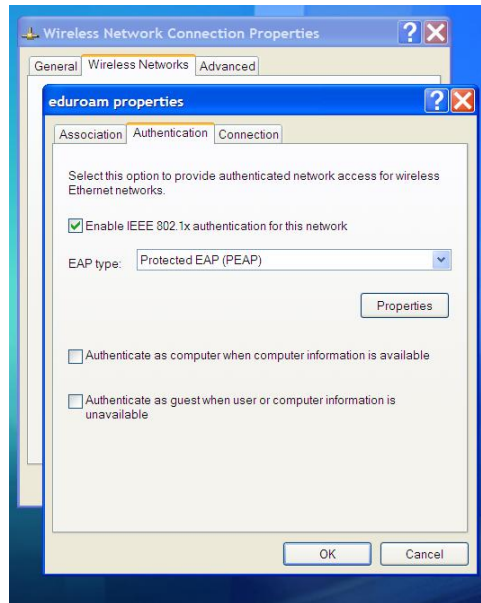


Figure 2 - Screen appearance at step 13.

14. Select **EAP Properties**:
15. Select **Authentication method as Secured Password (EAP-MSCHAP v2)**.
16. Select **Configure...**
17. Ensure that **Automatically use my Windows logon name and password** is **NOT** selected.
18. Click **OK** on the **EAP MSCHAP v2 properties** window.

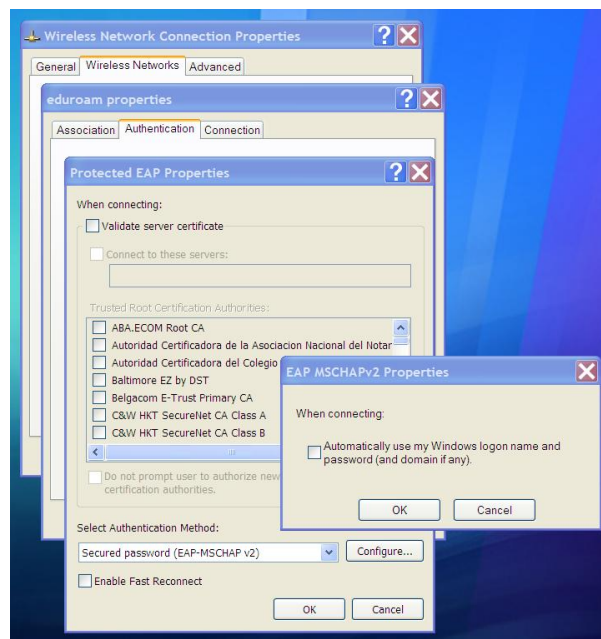


Figure 3 – screen appearance at step 17.

19. Ensure that **Validate server certificate** is **NOT** ticked.
20. Click **OK** for the **PEAP Properties**.
21. Click **OK** for **Eduroam Properties**.
22. Click **OK** for **Wireless Network Connection Properties**.
23. A dialogue balloon associated with the wireless network icon in the systems tray will appear, prompting the user to **Select a certificate or other credentials**. Click on this balloon.
24. In the resultant **Enter Credentials** window, type your own **University's Eduroam login details***, with the user name (eg.ab123@xxx.ac.uk) and then the password, leaving the **domain** field blank.
25. Click **OK**. Your laptop should now authenticate and, if successful, gain network access.

**If you are unsure what username and password to use you must contact your own University for help.*