



Greenwich Cares

Supporting and empowering
children in care, care leavers
and care-experienced students.



UNIVERSITY OF
GREENWICH
London | Kent

Welcome to the University of Greenwich

Dear Student,

Congratulations on your achievements so far! Hopefully, your next step into higher education will be your most rewarding yet and will be a springboard for your future career – just as it's been for our previous students.

We look forward to welcoming you to our university and the start of your higher education journey. We recognise the unique challenges that care leavers and care-experienced students can face, so we'll support you from your application right through to graduation and your search for employment.

Our designated members of staff are here to help. They'll encourage you to take up the many opportunities that the university has to offer while assisting you with any support that you might need. If you have issues related to your finances, accommodation, studies or wellbeing, they can support you. Sometimes, they're just there for a cup of tea and a chat!

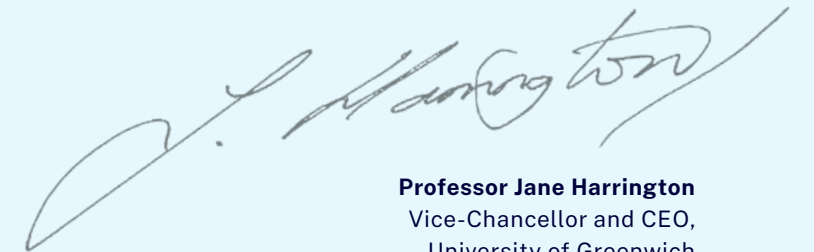
We also encourage our care leavers and care-experienced students to join our team of student ambassadors, where you will get the opportunity to broaden your experience, enhance your appeal to future employers, and make new friends.

Confidentiality is extremely important to us, and designated members of staff will not pass on details of your status as a care leaver or care-experienced student to anyone else without your permission.

Please take the time to read this guide as it sets out the support available to you. And if you'd like to know more, please get in touch.

Best wishes,

careleavers@greenwich.ac.uk
gre.ac.uk/support/care-leavers



Professor Jane Harrington
Vice-Chancellor and CEO,
University of Greenwich

Our history and commitment to children in care, care leavers and care-experienced students

Here at the University of Greenwich, we have provided dedicated support to care leavers and care-experienced students for over ten years. We were one of the first universities in the country to be awarded the Buttle UK kitemark for our commitment and support to enhancing the progression of care leavers into higher education. In 2025 our Care Leaver Adviser won the **Unsung Hero Award** at our Staff Awards Ceremony and in 2023 our Greenwich Cares Manager won the coveted **Students' Union Student Led 'Best Support Individual Award'** together with **'Extra Mile Award'** at our Staff Awards. All of these awards were for the dedication and support of care leavers and care experienced students at our University.

The number of care leavers entering higher education is very low compared to the national progression rate, and we've established close links with

local boroughs to support young children in care through youth and homework clubs, helping to raise their educational attainment for progression into further and higher education.

We are also a member of the Care Leaver Progression Partnership, which brings together organisations in Kent and Medway that are committed to improving the post-16 education and training experience for local children in care and care leavers.

We work collaboratively with local authorities and colleges across Kent and south-east London and are a member of the National Network for the Education of Care Leavers (NNECL) and a signatory member of The Care Leaver Covenant.

As well as working directly with students, we work in partnership with carers, local authorities, schools and colleges.

External Organisations

There are a number of external organisations and charities that could support you in your journey into higher education. For details of these, please check out the appendix at the end of this booklet.

The Complete University Guide has a page dedicated to applying to university as a care leaver, while Propel (part of the charity Become) provides contact details for the designated members of staff at individual colleges and universities. You'll also find the specific support offered to care leavers at each institution.

thecompleteuniversityguide.co.uk/universities/applying-to-university-as-a-care-leaver

propel.org.uk/UK/



Our offer to care leavers studying at the University of Greenwich

- Contextual admissions – reduced entry points
- Accommodation for 365 days a year for the duration of your degree (a standard contract with the option to include summer accommodation)
- Care Leaver Bursary of £1,500 for each progressive year of study, for up to four years (depending on the length of your undergraduate degree)
- Graduation Bursary of £200 to help with graduation costs
- Greenwich Friends Scheme, which provides peer mentoring and a buddy scheme to help you settle into university life
- Offer holder webinars on vital steps for preparing for your studies and bespoke visits to our campuses
- Preparation and transition events to welcome new care-experienced students
- Designated members of staff to help answer your questions and support you into higher education and throughout your time at the university.

You can find out more at:

gre.ac.uk/support-care-leavers



STUDENT LED
TEACHING
AWARDS
2023



Contents

Pre-entry support, advice and opportunities

- Bespoke visits and webinars
- Taster Days
- GREAt Minds Twilight Lectures
- GREAt Skills workshops
- Careers advice
- Campus tours and information evenings
- Open Days
- STAART

Applying to university

- Bespoke visits and advocacy
- Application evenings – personal statements and funding
- UCAS application form
- Contextual admissions

Government finance

- Student Finance England
- Tuition fees and maintenance loans
- Childcare Grant and Parents' Learning Allowance
- Disabled Students' Allowance
- Local authority funding

Financial support at the University of Greenwich

- University bursaries and scholarships
- Greenwich Bursary
- Care Leaver Bursary
- Commuter Bursary
- Greenwich Hardship Fund
- Money advice and support

Other sources of financial support

- External organisations
- Money saving tips

Accommodation

- Halls of residence
- Living independently
- Medical treatment
- Getting around our campuses
- Parking

Transition support at the University of Greenwich

- Greenwich Friends Scheme
- Meet and Greet
- Transition Event
- Registration
- Welcome Week
- Student Centres
- Students' Union
- Social support
- More on transition support

Ongoing support while you study

- Wellbeing Support
 - Mental Health
 - Counselling
 - Chaplaincy
 - Spectrum.Life platform and mobile app
- Advice and Guidance
 - Student Centres
 - Digital Student Centre
 - Student Unions
 - Campus Ambassadors
 - Keeping you safe
 - SafeZone App: Report and Support
 - Resident Assistants (RAs) and security staff

Disability and dyslexia STAART

Academic

- Personal tutors
- IT and Library Services
- Academic Skills and Study Workshops
- The Maths Centre

Legal

- Legal Advice Centre

Employment

- Employability and Careers Service
- Student Ambassador Scheme

Appendix

- External organisations



Pre-entry support, advice and opportunities

Are you wondering if university is right for you or unsure about what subject you want to study? Our taster sessions and Open Days can help you decide. We also have webinars and lectures to help you with your studies and career planning.

View our care leaver webpages:

gre.ac.uk/support/care-leavers

Get information on events below:

gre.ac.uk/events/prospective-students



Bespoke visits and webinars

We can arrange individual or group campus tours and webinars for children in care and care leavers. These provide the opportunity to get a taste of university life and meet current students. For individual visits, we will do our best to find students studying similar subjects to those you are interested in. You may also be able to talk with another care leaver about life on campus.

Contact us for further information:

careleavers@gre.ac.uk



Taster Days

Our Taster Days will give you a chance to experience a subject you enjoy and are considering studying at university. To attend, you will need to be in year 12 or 13, or in FE year 1 or 2.

You'll be able to attend sample lectures, gain an insight into university life, chat with student ambassadors and get accustomed to the campus. Included in the

visit is guidance on the application process, including an overview of entry requirements.

GREAt Minds Twilight Lectures

Our twilight lectures are delivered by academics and cover subject areas that complement students' sixth form or college studies. They also provide an insight into studying these disciplines at degree level.

GREAt Skills workshops

These workshops can help you improve your academic skills in preparation for university study. They are designed for students embarking on their Extended Project Qualification or IB Extended Essay but are generic enough to be applicable to all academic work.

Careers advice

Our pre-entry activities and events can help you prepare for university. If you have questions about your future career that are not covered by these events, just email us and we'll do our best to assist you.

careleavers@gre.ac.uk



Campus tours and information evenings

If you're thinking about studying with us or want to find out what makes the university such a unique place to learn, why not join us on a campus tour? They're a great way to get to know us and check out where you'll be studying.

You can also speak with staff and students about studying a specific subject at one of our information evenings.

Open Days

Why not join us on an Open Day? You can meet staff and students and attend our programme of talks. If you're visiting on your own, we can arrange for one of our student ambassadors to accompany you. Just get in touch at least two weeks before the event:

careleavers@gre.ac.uk



Check out our Open Day dates:

gre.ac.uk/events

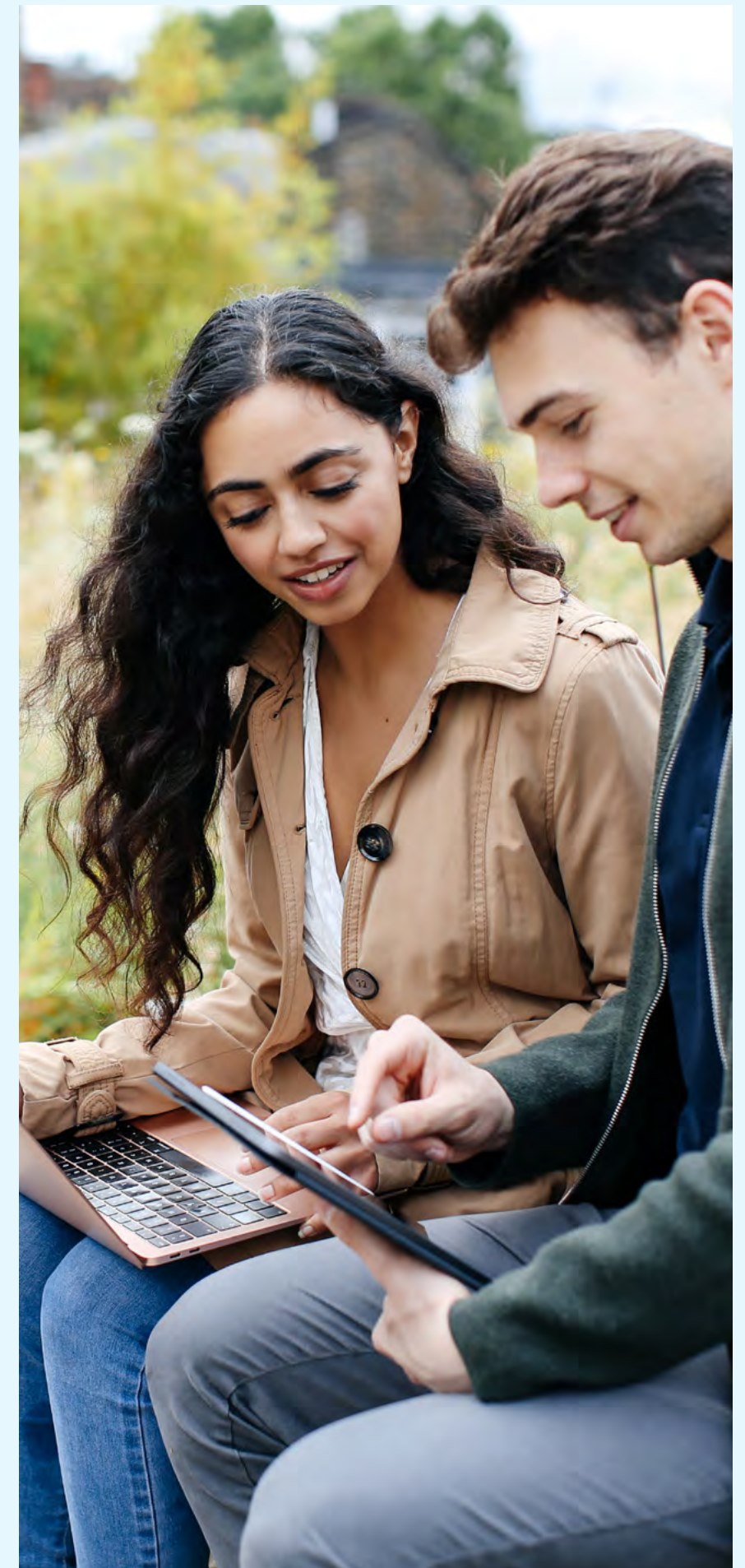


STAART

STAART (formerly the *AccessAbility Project) supports prospective and current students who have a disability, long-term health condition, specific learning difficulty (like dyslexia), and/or mental health condition (such as depression or anxiety). You don't need a diagnosis to join STAART.

The project is open to local disabled and dyslexic students who are in year 11 or above. Join the team and you'll get access to our social channels, as well as workshops and events such as our specialist preparation and transition days.

gre.ac.uk/support/disability/staart



Applying to university

Bespoke visits and advocacy

We can offer you an online or on-campus meeting with one of our designated members of staff. They can answer your questions about making your application and studying at the university. You can also find out about the support that's available to you, including your entitlements to finance and accommodation.

Contact us for further information:

careleavers@gre.ac.uk



Application evenings – personal statements and funding

Our application events take place throughout the year. We'll guide you through your UCAS application, provide you with tips on writing an effective personal statement, and explain student finance and your funding options.

Find out more:

gre.ac.uk/events/prospective-students



UCAS application form

UCAS provides lots of information on completing its application form, writing a personal statement, and getting funding.

Check out the UCAS website:

ucas.com/undergraduate/applying-university/undergraduate-individual-needs



So we can give you the support you need, please make sure that you tick the box on the 'Care' question on the UCAS application form. This will enable us to get in touch and let you know what finance, accommodation and wellbeing support you're entitled to. This information is treated in the strictest confidence and your application won't be disadvantaged in any way.

Contextual admissions

We offer special consideration, with a reduction of 16 UCAS points on the advertised entry tariff.

This applies to all undergraduate programmes on our website, including those provided by our partner colleges.

For further information on eligibility and how to apply:

gre.ac.uk/study/apply/contextual-admissions



Government Finance



Student Finance England

The student support you'll receive to fund your studies will depend on several factors, including where you study and your personal circumstances. You should apply online as soon as you know that you intend to enter higher education.

To apply for student support and find out more about student finance loans, grants and bursaries, please visit the address below. You'll also find a Student Finance Calculator, which can give you an estimate of the funding you might receive:

gov.uk/browse/education/student-finance.



Tuition Fees and Maintenance Loans

Care leavers who meet the eligibility criteria are entitled to apply to Student Finance England for a tuition fee loan to cover the costs of study and a maintenance loan for general living costs. As a care leaver, you will be required to provide a letter from your local authority to confirm your previous care arrangements. For speedy payment of your student finance loan, please ensure that you attach the letter to your finance application.

For further information, please visit:

ucas.com/finance/undergraduate-tuition-fees-and-student-loans



Childcare Grant and Parents' Learning Allowance

If you have dependent children, you may be eligible to apply for a grant/allowance to help with the cost of childcare while you study.

Disabled Students Allowance

If you're a student with a learning difficulty, health problem or disability, you can apply for Disabled Students' Allowance. This is intended to cover some of the extra costs you have due to your condition. You can receive this on top of your other student finance, and you won't need to pay it back.

For further details:

gov.uk/disabled-students-allowances-dsas



Local Authority funding

A local authority bursary of at least £2,000 is paid to all eligible care leavers up to the age of 25 entering higher education. Please speak to your local authority to discuss how you will receive your bursary as it can be paid in a lump sum or in instalments.

Local authorities have a responsibility to help with accommodation out of term time and other costs related to entering higher education. As part of your pathway plan, you should discuss with your local authority what level of support they'll provide.

Find out more about your Local Authority Local Offer to Care Leavers:

careleaveroffer.co.uk



Financial Support at the University of Greenwich

University Bursaries and Scholarships

The university offers awards to help students with the cost of their studies. The full list, together with eligibility criteria and how to apply, can be found on our website:

[gre.ac.uk/finance/funding-your-studies/scholarships-and-bursaries](https://www.gre.ac.uk/finance/funding-your-studies/scholarships-and-bursaries)



Greenwich Bursary

The Greenwich Bursary offers £700 to new undergraduate students entering Year 0 or 1 who meet the eligibility criteria. If you're eligible, you'll receive £350 on one of our Aspire Cards by December in your first year. The second payment will be made in March. The bursary is paid for one year only.

You do not need to repay any money awarded.

Care Leaver Bursary

We provide young care leavers with a bursary of £1,500 for each progressive year of study, for up to four years, depending on the length of your undergraduate degree. As part of the bursary, we also provide £200 towards the cost of graduation. This bursary is not means-tested, but you are required to be in receipt of full student support.

For eligibility criteria and how to apply:

[gre.ac.uk/bursaries/care-leaver-bursary](https://www.gre.ac.uk/bursaries/care-leaver-bursary)

You do not need to repay any money awarded.

Commuter Bursary

The Commuter Bursary is worth 50% of your monthly commuting costs on public transport between home and university up to £500 per academic year. The bursary can also support petrol costs, but you will need to demonstrate why you have to commute by car..

You do not need to repay any money awarded.

Greenwich Hardship Fund

If you are facing unexpected financial difficulties or hardship during your studies, the Greenwich Hardship Fund may be able to help. This fund is means-tested and supports home full-time or part-time students who are facing unexpected financial difficulties. Guidance on eligibility and how to apply can be found on our website:

[gre.ac.uk/finance/funding-your-studies/access-to-learning-fund](https://www.gre.ac.uk/finance/funding-your-studies/access-to-learning-fund)



You do not need to repay any money awarded.

Money advice and Support

The university has a wealth of information on money issues and can help you to plan and manage your finances. You'll get information and advice on::

- Budgeting
- Debt advice
- Student bank accounts
- Council tax

Go online for more information:

[gre.ac.uk/finance/money-advice](https://www.gre.ac.uk/finance/money-advice)

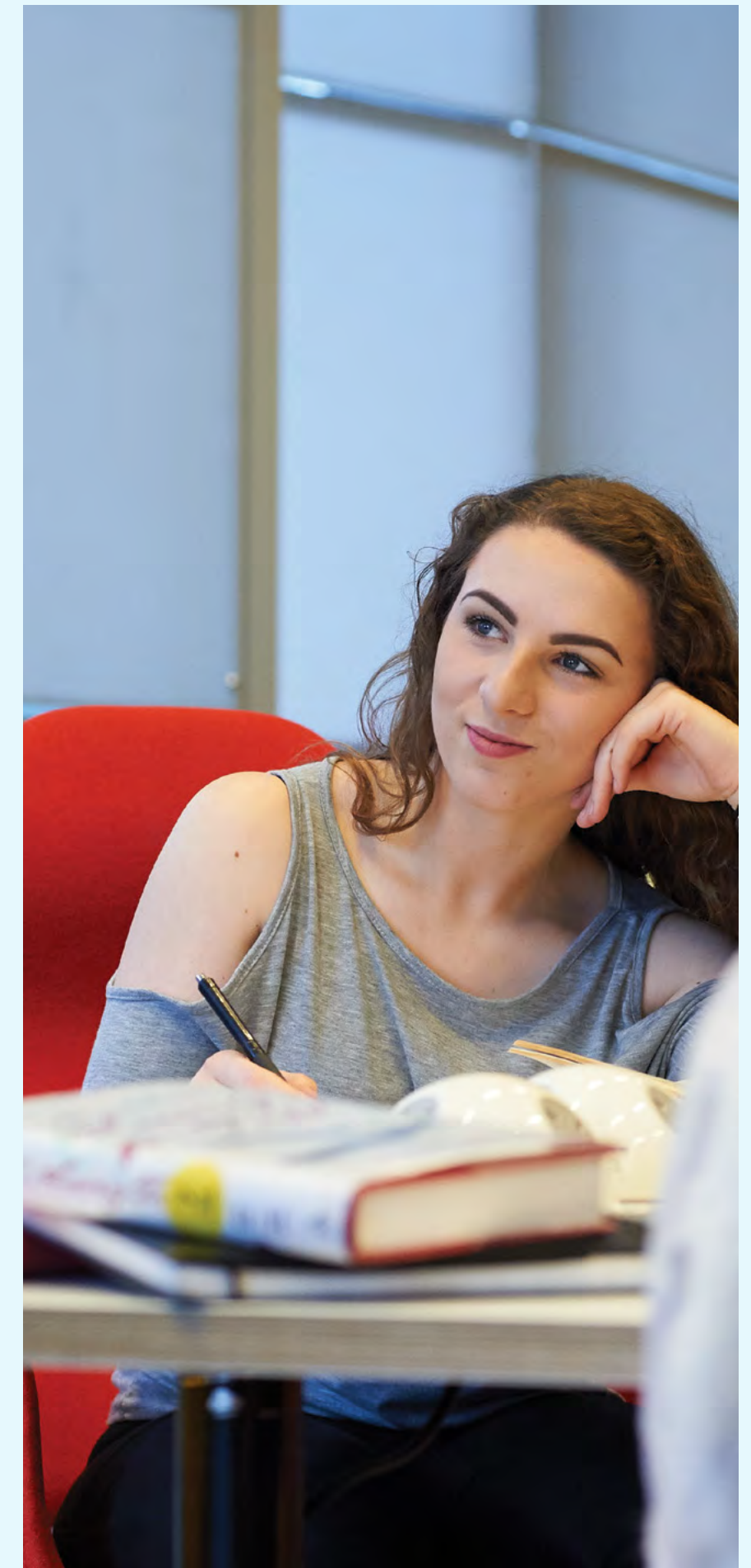


Once you're a student with us, you can make an appointment with our Student Fees and Funding Advice Service. Student finance advisers in each of our three Student Centres can offer financial support, advice and guidance.

Please note that this service is only available to current students.

You can find out more online:

[gre.ac.uk/finance/contact-us](https://www.gre.ac.uk/finance/contact-us)



Other sources of financial support

External Organisations

There are several external organisations and charities that may be able to provide small grants and bursaries to help support your journey into higher education. These include The Rees Foundation, Turn2us, and The Capstone Care Leavers Trust.

For website and contact details, please see the appendix at the end of this guide.

Money Saving Tips

- Sign up to Unidays and Student Beans for exclusive student discounts for free:
myunidays.com/GB/en-GB
studentbeans.com/uk
- Compare utilities, bank accounts, insurance or general shopping at moneysavingexpert.com/
- Check out the Totum (National Union of Students) student discount card
totum.com/
- Consider getting a Railcard or an 18+ Oyster card
- 16-25 Railcard
railcard.co.uk/16-25
- 18+ Student Oyster photocard
gov.uk/fares/free-and-discounted-travel/18-plus-student-oyster-photocard



Accommodation



Halls of Residence

Living in halls can be an exciting experience and a great way to meet new people and make lifelong friends.

As a care leaver, you'll get priority for accommodation throughout the year (including Christmas, Easter and summer) for the duration of your studies. Just make sure that you have identified yourself as a care leaver and have followed the required steps to secure housing.

The fees for our student halls include utility bills and contents insurance. You'll also get free internet, Wi-Fi and gym membership (Greenwich and Avery Hill only), making it easier for you to manage your money. All our university accommodation has 24-hour security, and residential support staff are on hand 24/7.

If you choose not to live in halls, Accommodation Services can signpost you to information about private renting and storage.

Please note, you will need to select the university as your firm choice before applying for accommodation.

For information and videos on our halls of residence, please check out our accommodation pages.
gre.ac.uk/accommodation



Living independently

We recognise that some care leavers may be living in their own accommodation. You can get support and information on any private housing issues you may be experiencing through our Students' Union Welfare Advice Service.

You'll be exempt from paying council tax if you're studying full-time, but you'll need to let your local borough council know. Once you're fully registered with the

university, we can provide a letter indicating that you're studying with us. If you are a care leaver, you should also contact your personal adviser as additional correspondence may be required to confirm your care leaver status.

For further information please go to:

gre.ac.uk/finance/money-advice/council-tax
greenwichsu.co.uk/advice



Medical treatment

If you are living in halls, don't forget to register with a doctor / dentist at a medical centre on or near the university:

gre.ac.uk/support/medical



Getting around campuses

The university offers a free intercampus bus service between Avery Hill, Greenwich and Bathway (our site in Woolwich). An intercampus bus service also runs between Medway and Avery Hill/ Greenwich. For this service, you'll need to purchase a ticket before you travel.

gre.ac.uk/about-us/travel/bus



Parking

There are parking facilities at both Avery Hill and Medway Campuses for a small charge.

gre.ac.uk/about-us/travel/parking-permits



Transition support at the University of Greenwich

If you've identified yourself as a care leaver or care-experienced student on your UCAS application, we'll contact you before the start of your course. This is likely to be by phone and will allow us to find out a little bit more about your circumstances. We'll also invite you to our Transition Event, which usually takes place in September. This is where staff can answer your questions, signpost you to the right services, and act as an advocate for you if needed.

We would also encourage you to get the support of a current student through the Greenwich Friends Scheme.

Greenwich Friends Scheme

Starting at university can be challenging for anyone, so why not sign up for our Greenwich Friends Scheme? This will put you in touch with a current student who will help you find your feet and give you confidential one-to-one support and guidance.

We will try to match you with someone studying in a similar area to you. Your Greenwich Friend will be able to support you by phone, text, email and in person, helping you succeed in your studies and giving you the best start to your university life.

Most mentoring relationships end when you are settled-in, or at the end of the first term. However, in certain cases, the mentoring can continue on a reduced basis, for no longer than the end of your first academic year.



Meet and Greet

A Greenwich Friend will be on each of our campuses on moving-in day in September. This means that you'll have someone on-hand to answer questions, help you to move into halls, and guide you around the campus when you arrive. They can also be a welcoming, friendly person to have a cup of tea with on this important day.

Transition / Welcome Event

Our Transition Event will give you the chance to meet our designated members of staff and some of our Greenwich Friends student ambassadors. You'll get an overview of our support services, and you can chat with us to check that the support you currently have in place is right for you. You'll be able to complete registration early during the event, so make sure that you bring along your documents (such as proof of identity).

Registration

There are two parts to our registration process:

Part 1: Online Registration

This requires you to log in to the university student portal and verify information about yourself and your programme of study. You will need to provide evidence of your qualifications and upload a suitable photo for your ID card.

Part 2: Face-to-Face Registration/ Card Collection

Once you have completed online registration, you will need to attend face-to-face registration during induction week. At this stage, you will be required to provide a valid form of identity.

Welcome Week

Our Welcome Weeks ('Freshers') are a great opportunity to familiarise yourself with the campus. During this time, the Students' Union host a range of activities, so you can socialise with fellow students and make new friends. Each campus has its own events, giving you the chance to find out about the many societies you can join and ways to access the services we have to offer.

Student Centres

There is a Student Centre on each of our campuses. These provide information, advice and guidance on our services. For instance, you might want to:

- Talk to a student finance adviser
- Get wellbeing support.

You can visit a centre at any campus for support.

gre.ac.uk/student-services/student-centres



Student Unions

Greenwich Students' Union provides an advice service for students. This is independent of the university, so you can get an impartial view and support on academic and non-academic issue such as welfare, finance, housing and pastoral support.

greenwichsu.co.uk/advice/



Social Support

Greenwich Students' Union hosts social events, as well as sports societies and societies related to academic subjects, hobbies and interests. These are run by likeminded students and provide a great way to meet new people.

greenwichsu.co.uk/societies/
greenwichsu.co.uk/teamgreenwich/



More on transition support

Once you're fully registered at the university, you'll be able to access further information about transition support through the student portal. In the meantime, you can find out more on our website:

gre.ac.uk/



On-going support whilst you study



Wellbeing Support

Our student wellbeing teams on each campus provide advice and support on maintaining your health and wellbeing while studying. Once you're a student, you can book a one-to-one appointment, plus you'll have access to lots of useful information on wellbeing through the student portal.

You can also find information on our website:

gre.ac.uk/student-services/support

Mental Health

Our mental health advisers can meet with students on a one-to-one basis and coordinate meetings with staff and students to explore the best ways to support your wellbeing.

Counselling

The counselling service is available to all full-time students on campus. It can provide emotional support and signpost you to services offered by the university and external organisations. You can book an appointment by email or by visiting the Student Centre. In an emergency, you can also contact the organisations below.

The Samaritans:

116123 (Free, around the clock independent help)

Chaplaincy

This service is available to students of all faiths and none. You'll find a prayer room for quiet reflection on all three campuses.

Spectrum.Life platform and mobile app

Once you are a registered student, Spectrum.Life will give you access to fitness plans, recipes, and e-learning content related to remote working, sleep and mental health, among other topics. In addition, you will have access to numerous health and wellbeing related rewards, such as discounted Fitbit fitness trackers.

The platform also gives you direct access to a Student Assistance Programme (SAP), which is a confidential, in-the-moment service that provides support to university students. The SAP service is available 24/7, 365 days a year and covers numerous topics such as stress, anxiety, low mood, financial worries, loss and grief, relationship problems, substance abuse issues, and much more.

You can access the service through a confidential freephone telephone line, an online chat function through the platform, or by requesting a call back.

Access the SAP directly by phone or register for the platform below:

Freephone UK: 0800 0318227

WhatsApp: text 'Hi' to 074 1836 0780 International: 00353 1 518 0277

Pro tip: use Google Chrome to ensure the best performance of the platform

Register now for the Spectrum.Life platform and mobile app.

This site is not intended for individuals in an emergency.



Advice and Guidance

Student Centres

There is a Student Centre on each of our campuses. These provide information, advice and guidance on our services. For instance, you might want to:

- Talk to a student finance adviser
- Get wellbeing support.

You can visit a centre at any campus for support.

gre.ac.uk/student-services/student-centres

Digital Student Centre

- Our Digital Student Centre is your one-stop-shop for student enquiries and enhanced personalised support online.
- Find answers to common questions, raise enquiries or request documents like student status letters through our Digital Student Centre.
- Access to frequently asked questions and other services can be accessed 24/7.

studentcentre.gre.ac.uk/

Student Unions

Greenwich Students' Union provides an advice service for students. This is independent of the university, so you can get an impartial view and support on academic and non-academic issue such as welfare, finance, housing and pastoral support.

greenwichsu.co.uk/advice/

Campus Ambassadors

Campus Ambassadors are current students who work at the university. They can assist you with queries and signpost students to appropriate support services. They can be found during term time at our Welcome Desks on each campus.

student-engagement@gre.ac.uk

Keeping you safe

SafeZone App:

- The SafeZone app is free to download and designed to help during emergencies.
- The app allows you to get in contact with first aiders, security and/or emergency response teams.

gre.ac.uk/articles/public-relations/safezone

Report and Support

- Report & Support is an online platform where students, staff and visitors can share how they have been affected by various forms of harassment.
- The platform allows you to disclose things anonymously.
- You can disclose things you have experienced/ witnessed and can disclose on behalf of another with permission.

gre.ac.uk/articles/public-relations/report-support-will-officially-launch-25-may

Resident Assistants (RAs) and security staff:

- RAs (Current students) live on campus and are there to assist or advise when needed during 6pm – 8am weekdays and weekends.
- All the RAs are first aided trained.
- All security staff are also first aiders and are trained to assist in emergency situations.
- All campuses have 24/7 security.

gre.ac.uk/accommodation



Disability and Dyslexia



You can contact the student wellbeing coordinators for disability and dyslexia via the Student Wellbeing Service. They can help with claiming Disabled Students' Allowance and provide ongoing support and extra help

with your studies, including setting up special exam circumstances.

gre.ac.uk/student-services/support/disability

STAART



The STAART team provides information and guidance to disabled and diverse students who may have concerns while at university. Our STAART ambassadors, university students with their own disability or diversity, provide balanced first-hand

experience of the achievements and challenges of university life.

gre.ac.uk/support/disability/staart

Email: staart@gre.ac.uk

Academic



Personal Tutors

You'll be assigned to a personal tutor during your first week. They will look after your academic development and welfare and will be your first point of contact for academic support.

If your personal tutor is unable to help you, they will signpost you to one of our support services. Alternatively, you can contact your programme leader. You'll find their contact details in your course handbook.

IT and Library Services

Our academic services librarians deliver information skills sessions and assist students to access library resources. We also have a dedicated team who work on the IT Service Desk. This is your first point of contact for all problems and queries relating to our IT services and software.

Please note that as a student at the University of Greenwich, you get Office 365 and other course-related software for free!

Find out more about our IT and library services:

gre.ac.uk/it-and-library

As a student at the University of Greenwich you get Office 365 and other course related software for free!

Academic Skills and Study Skills Workshops

You can find lots of useful information on academic skills on our website. .

Our free Study Skills service can help you learn to write and reference in an academic style. You can also get advice on writing essays and dissertations..

libguides.gre.ac.uk/academicskills/support

gre.ac.uk/academicskills

The Maths Centre

Whatever course you're studying, the Maths Centre can offer you 'drop-in' help throughout the year. As long as you're a fully registered student, our tutors can help you improve your maths and statistical skills and prepare for exams.

gre.ac.uk/articles/ils/working-with-numbers

Legal



Legal Advice Centre

You may find this free confidential service useful if you require legal advice. The service is provided by retired barristers and trained student advisers. Advice can cover a range of legal issues, including

housing, employment law and family law.

gre.ac.uk/legal-advice-centre

Email:

legaladvicecentre@gre.ac.uk

Employment



Employability and Careers Service

The Employability and Careers Service can help you find employment both while you're studying at the university and after you graduate. This includes internships and flexible part-time vacancies at the university.

Support offered includes our E-Learning Centre and face-to-face consultations with a careers adviser to prepare you for job applications.

gre.ac.uk/careers

Student Ambassador Scheme

At the University of Greenwich, we employ a team of student ambassadors, current students who support the work of staff across the university. As a student ambassador, you'll broaden your experience, enhance your appeal to future employers, and make new

friends. You'll also enjoy flexible part-time employment while you study.

Being a student ambassador is about having fun, being professional, and using your passion for your course and our university to inspire others. It's all about sharing your personal experiences in higher education, helping advise and guide prospective students on university life, and providing support for operational activities across our university.

Opportunities are varied and include:

- Mentoring in schools
- University Open Days
- Our Greenwich Friends Scheme (support for care leavers)
- Office-based administrative roles.

jobs.gre.ac.uk/vacancies.aspx?cat=604



Appendix

External organisations



APPG LAC - All-Party Parliamentary Group for Looked After Children

The APPG LAC is open to looked after children and care leavers under the age of 25 who are interested in lobbying for change in the care system.

becomecharity.org.uk/improving-the-care-system/appg/



Article 26 – Helena Kennedy Foundation

The main aim of Article 26 is to promote access to higher education for people who have fled persecution and sought asylum in the UK. .

article26.hkf.org.uk/



Barnardo's

Barnardo's works directly with children, young people and their families. It runs vital services across the UK, including an advocacy service for children and young people.

barnardos.org.uk/



Become

Previously known as The Who Cares? Trust. Become run a Care Advice Line, have lots Previously known as The Who Cares? Trust, Become administers the All-Party Parliamentary Group for Looked After Children. It also runs a care advice line and provides useful fact sheets. .

becomecharity.org.uk



Buttle UK

Buttle UK provides practical solutions for children living in care. Direct support is based on individual need, and areas of focus include boarding places, domestic abuse, emergency essentials, estranged young people and kinship care.

buttleuk.org/



The Capstone Care Leavers Trust (CCLT)

The CCLT awards grants to people aged 17 to 25 who have been in local authority care in England or Wales and are in need. It also offers advice and guidance to young people to help reduce their experience of social exclusion and enhance their life chances.

capstonecareleaverstrust.org/



Care Leavers Association

The CLA is a user-led charity run by care leavers for care leavers. It provides advice about entitlements, housing, education and employment. Older adults in care as children can also find out about getting access to records, abuse in care, and family tracing.

careleavers.com/



Coram Voice

Coram Voice offers practical help and emotional support to vulnerable children, young people and their families. It runs an advocacy helpline and provides information for children in care and care leavers on its website..

coramvoice.org.uk/

Appendix

External organisations



Drive Forward

A London-based organisation, Drive Forward offers one-to-one support, mentoring, training and career opportunities to help care leavers into work experience, internships, employment, education and training.

driveforwardfoundation.org/



Just for Kids Law

Just for Kids Law delivers holistic, client-led support to children and young people, taking them from crisis to stability and onwards into independence. This is achieved through its innovative community-based legal representation, advocacy and opportunities programme..

justforkidslaw.org/



Legal Action Group

Legal Action Group is a national, independent charity which promotes equal access to justice for members of society who are socially, economically or otherwise disadvantaged.

lag.org.uk/home



Local Government Ombudsmen

The Local Government Ombudsman investigates complaints about councils and some other authorities and organisations. These include providers of care homes and home care.

lgo.org.uk/



NNECL – The National Network for the Education of Care Leavers

Established in 2013, NNECL is committed to the progression and support of care leavers in higher education. Its website lists resources and outreach opportunities across the country.

nnecl.org/



Propel

Propel, which is part of the charity Become, provides guides on funding and support for higher education. It can also supply the names and contact details for designated members of staff at individual universities and colleges.

propel.org.uk/UK



Rees Foundation

The Rees Foundation provides a range of services, including peer networks, creative activities and financial support.

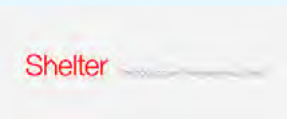
reesfoundation.org/



Refugee Education UK

Refugee Education UK provides information and advice sheets for refugee and asylum-seeking students who want to enter higher education.

reu.org/



Shelter

Leaving care to live on your own is a big step. Shelter offers advice about the housing options and extra help you can get if you are a young person leaving care.

shelter.org.uk/

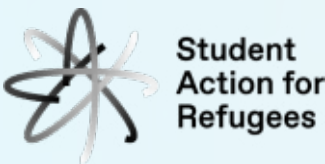


Appendix

External organisations



Siblings Together
A London-based charity, Siblings Together helps young people in care to initiate and continue to have contact with their siblings.
siblingstogether.co.uk/



Student Action for Refugees
Student Action for Refugees provides a range of resources and support for refugees looking to access university.
star-network.org.uk/



Turn2Us.org.uk
Turn2us is a national charity that helps people in financial hardship to access welfare benefits, charitable grants and support services. This is carried out online, by phone, or face to face through partner organisations and volunteers.
turn2us.org.uk/



Unite Foundation
Unite scholarships provide students with free purpose-built accommodation for three years of study, supporting them to succeed while knowing that they have a place to belong at university.
unitefoundation.co.uk/

