



**UNIVERSITY OF  
GREENWICH**

Greenwich Business  
School

**24 June 2026**

Old Brewery Hall  
Greenwich

# **Learning & Teaching Festival 2026**

**Reimagining Higher Education  
through the lenses of paradox,  
curiosity and regeneration**

Hosted by Greenwich Business School and SEBE (Scholarship  
Excellence in Business Education)

# Welcome

## Welcome to the Greenwich Business School Learning & Teaching Festival 2026.

This year's Festival invites us to pause, reflect and reimagine the future of Higher Education at a time of profound global change. Across society, technology, business, politics and culture, we are navigating increasing complexity, uncertainty and transformation. These challenges call upon us to rethink not only what we teach, but how we teach, learn, lead and collaborate.

For the first time, the Festival adopts a World Café approach, creating a dynamic and participatory space for meaningful dialogue. Through keynote talks and provocations, collaborative conversations and collective reflection, we will explore some of the most pressing questions facing Higher Education today.

Guided by the lenses of Paradox, Curiosity and Regeneration, the Festival offers an opportunity to share perspectives, challenge assumptions, generate new ideas and strengthen our community of educators, researchers and professional practitioners.

We hope the day will inspire fresh thinking, foster new connections and contribute to the continued development of innovative, inclusive and impactful educational practice.

We look forward to welcoming you.



## SEBE Directors



Dr Sara Gorgoni



Dr Han-Huei (Crystal)  
Tsay

## Learning and Teaching Festival (LTF) Co-Chairs



Catherine Farrant



Julia Tybura

# LTF Design Team



Dr Ratnesvary  
Alahakone



Dr Munazzah Iqbal



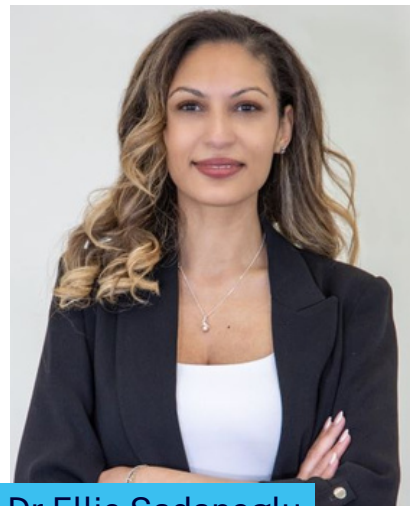
Dr Natasha Lawlor-  
Morrison



Dr Yuemei Ma



Dr Klairoong Hawa  
Phairor



Dr Ellie Sadanoglu



Dr Shazerinna Shah



Chryssi Tzanetou



Dr John Tull

# Event Management & Marketing Team



Grace Evenden



Dr Jiawei Li



Peterson Okereke



Eirik Thue

# Festival at a glance

## Details

**Date:** Wednesday 24 June 2026

**Time:** 09:00 – 18:00

**Venue:** The Old Brewery Hall, Greenwich

**Hosted by:** Greenwich Business School & SEBE (Scholarship Excellence in Business Education)

## The Festival journey

A one-day participatory festival bringing together educators, researchers, practitioners and leaders to explore the future of Higher Education through conversation, creativity and collective inquiry.

There are two world cafés with lunch in between:

**Morning session:** 09.00 - 13.20

**Lunch:** 13.20 - 14.00

**Afternoon session:** 14.00 - 17.55

You are welcome to join either or both.

Welcome address and opening

Keynote Provocation

Mini Provocations

World Café Conversations

Collective Reflection

Aha Moments & Action Planning

Impact

# Why attend?

Join us for a dynamic, interactive festival exploring how we can reimagine Higher Education in a rapidly changing world.

Expect engaging World Café conversations, thought-provoking keynote provocations, and creative collaboration that sparks new ideas.

Throughout the day, there will also be opportunities to network, reflect and connect with others.

- Spark new thinking with a dynamic academic community
- Play a role in shaping the future of Higher Education
- Turn ideas into collaboration and real-world impact
- Help create an education system that is curious, inclusive and future-focused



# What is a World Café?

The World Café is a collaborative approach to dialogue that enables participants to explore questions that matter through conversation, reflection and collective intelligence.

Built on the belief that people already possess the wisdom, creativity and experience needed to address complex challenges, the World Café creates opportunities for diverse perspectives to connect and evolve.

Rather than sitting through a series of presentations, participants move between conversations, contribute ideas, challenge assumptions and build on the insights of others.

This year's Festival will feature two World Café sessions - one in the morning and one in the afternoon. Each session will begin with a keynote provocation followed by a series of shorter provocations, facilitated conversations and collective reflection.

## World Café principles

- Focus on questions that matter
- Listen to understand
- Connect diverse perspectives
- Share experiences and insights
- Build on one another's ideas
- Encourage curiosity and creativity
- Capture collective learning

# How it works

Each World Café session follows a structured yet energising flow:

**Welcome address and overview**

**Keynote Provocation:** a short keynote speech (20 minutes) challenges assumptions and opens new lines of thinking.

**Mini Provocations:** five provocateurs each deliver a 5-minute provocation to seed the table conversations.

**World Café Conversations:** participants join discussion tables for three rounds of facilitated dialogue.

**Collective Reflection:** the provocateurs and table facilitators present the emerging insights, patterns and ideas to the wider group including outputs such as rich pictures, collages and ideas for future practice.

**Identify what we do next, how and when:** participants identify opportunities for collaboration, innovation and future impact.



# Three rounds of conversation

Each World Café is structured around Rolfe's reflective framework - What?, So What?, and Now What? - progressively deepening the conversation across three rounds:

- **Round 1 - Understanding (What?):**
  - What else do we need to understand to reflect more deeply? Exploring experiences, perspectives and assumptions.
- **Round 2 - Reimagining (So What?):**
  - How can we reimagine Higher Education to build value, impact and inclusivity through the lenses of paradox, curiosity and regeneration? Generating ideas, possibilities and new ways of thinking.
- **Round 3 - Creating futures (Now What?):**
  - What might this reimagined future look and feel like, and how might we get there? Imagining practical actions and pathways forward with creative and reflective outputs.

## Creative reflection

Throughout the day, participants will be encouraged to capture ideas through a variety of creative methods. These outputs will contribute to a living Festival Gallery and help shape future communities of practice, scholarship and impact activities.

- Rich pictures
- Visual mapping
- Doodling and sketching
- Collages (using textiles and recycled materials provided)
- Graphic artistry
- Collective storytelling

## The law of two feet

Participants are encouraged to move between conversations where they feel they can contribute, learn or gain fresh energy. This allows ideas to travel across tables and helps create new connections.

# Exploring Higher Education through three lenses

The Festival is shaped by three interconnected lenses, each offering a distinctive angle on the central theme of reimagining Higher Education. Together, they invite us to hold complexity, embrace the unknown and imagine new futures.

## The lens of paradox

How can we design a curriculum that embraces contradiction as a catalyst for learning? Rather than seeking to resolve tensions, we will explore how paradox can become a powerful driver of growth, creativity and innovation.

Together we will consider questions such as:

- How do we balance global relevance with local rootedness?
- How do we navigate the relationship between power and ethics?
- How can leadership and active citizenship coexist in a complex world?

## The lens of curiosity

How can we create learning environments where the most important questions are those we have not yet dared to ask?

Through the lens of curiosity, we will explore how imagination, creativity and inquiry can help us address some of the most significant challenges facing Higher Education and society.

Together we will consider:

- How can curiosity drive educational innovation?
- What happens when we move beyond what is already known?
- How can we create space for courageous questions and new possibilities?

## The lens of regeneration

How can Higher Education reimagine itself as a living, regenerative ecosystem?

This lens invites us to explore how our collective intelligence can contribute positively to our students, communities, organisations and the wider environment.

Together we will consider:

- What does regenerative education look like?
- How can Higher Education become a force for renewal and positive change?
- How can we create sustainable futures for people, places and the planet?

## What we hope to achieve together

Through these three lenses, the Festival aims to:

- Build and grow staff confidence in delivering an innovative and modern curriculum
- Support students to develop an informed, curious and critical approach that challenges norms and innovates for a better world
- Develop fabulous leaders in Higher Education
- Develop informed and multi-modal decision making to deliver local and global regeneration and renewal

# Festival programme

## Morning

Start	Finish	Activity
09:00	09:30	Registration, refreshments and networking
09:30	09:45	Welcome & Opening Address
09:45	10:00	Introduction to the Festival and Morning World Café (with Icebreaker)
10:00	10:20	Morning Keynote Provocation
10:20	11:10	Mini Provocations (5 provocations, 5 mins each)
11:10	11:30	Refreshment Break
11:30	12:30	World Café Conversations - 3 Rounds
12:30	13:00	Collective Reflections
13:00	13:20	Aha Moments and Next Steps

## Lunch

Start	Finish	Activity
13:20	14:00	Lunch, Visit the World Café Gallery and Networking

# Afternoon

Start	Finish	Activity
14:00	14:15	Review and Recap of the Morning World Cafe & Welcome to Afternoon Session (Co-Chairs)
14:15	14:30	Afternoon Opening Address
14:30	14:40	Introduction to the Afternoon World Café (with Icebreaker)
14:40	15:00	Afternoon Keynote Provocation
15:00	15:50	Mini Provocations (5 provocations, 5 mins each)
15:50	16:10	Refreshment Break
16:10	17:10	World Café Conversations - 3 Rounds
17:10	17:40	Collective Reflections
17:40	17:55	Aha Moments and Action Planning
17:55	18:00	Closing Reflections (Co-Chairs)
18:00 onwards		Informal Drinks and Networking

# Meet the keynote speakers

Each World Café session opens with a keynote provocation designed to challenge assumptions and stimulate new thinking, setting the tone for the conversations that follow.



## Morning keynote

# Stuart Norton, PFHEA

## Head of Educational Excellence, Advance HE

**Provocation:** *“The future of Higher Education: what student success demands of leadership.”*

Stuart Norton is Head of Educational Excellence at Advance HE. He has over 20 years' experience in higher education, with extensive expertise in designing and delivering strategic, institution-wide change.

In his role at Advance HE, Stuart focuses on thought leadership and evidence-based solutions to support institutions, educators and students. His work centres on enhancing the student experience, supporting student wellbeing, promoting inclusive practice, and building collaboration across the higher education sector.

Stuart has worked with senior colleagues, academic networks, students, Students' Unions, industry, employers and external agencies. His recent international work includes supporting higher education institutions in Lithuania, Bahrain, the UAE, Oman and Thailand, as well as regional initiatives with the British Council and the Department for International Trade.

He is a Principal Fellow of the Higher Education Academy (PFHEA), a certified LEGO® Serious Play® facilitator, and host of the Advance HE podcast Let's Talk About Student Success.



Afternoon keynote

## Vanessa Wilson

### CEO, University Alliance

**Provocation:** *“In the recently published British Social Attitudes Survey 34% of the British public say university isn’t worth the time/money and 77% say a degree is poor value for money, a sharp rise from 51% in 2014, do we just accept that with more people going to university we will see the prestige and value associated with a degree decrease because more people have degrees, OR have we reached an important crossroads and our next move is critical in changing our destiny.”*

Vanessa is the Chief Executive of University Alliance (UA) a mission group within the higher education sector representing the UK’s large and leading professional and technical universities, whose members specialise in working with industry and employers.



Vanessa joined University Alliance in March 2019 from UK Sport, the government’s elite sport body where she had been the Director of Commercial and Communications after several senior roles in the Civil Service over a period of 15 years.

Under Vanessa's leadership, University Alliance’s membership has seen a 50% increase and the organisation has become a trusted partner for government and a champion for professional and technical universities. In May, Vanessa joined Ministers and business leaders on the largest ever trade mission to the United States to champion UK higher education.

# Meet the provocateurs

Twelve provocateurs will contribute to ten provocations across our two World Café sessions — five in the morning and five in the afternoon. Some provocations will be co-delivered.

The profiles are organised, on the following pages, by session. Each profile also indicates the lens through which the provocation will be explored: Paradox, Curiosity or Regeneration.



# Morning session (09:00 - 13:20)



**Name:** Dr Natasha Lawlor-Morrison, Lecturer in Strategy and Leadership, University of Greenwich

**Lens:** Paradox

**Provocation:** *"Are we too focused on the present to help our students prepare for the future?"*



**Name:** Dr Thomas Ferretti, Senior Lecturer in Ethics and Sustainable Business, University of Greenwich

**Lens:** Paradox

**Provocation:** *"Teaching is simple, but it becomes harder when autonomy is taken away from professional educators and replaced with layers of administration, metrics, and a Kabuki theatre of performance indicators."*



**Name:** Dr Gerhard Kristandl, National Teaching Fellow, and Associate Professor in Accounting & Technology-Enhanced Learning, University of Greenwich

**Lens:** Curiosity

**Provocation:** *"Stop asking 'did they write this?' Start asking 'do they own this?' Academic integrity has been unattainable long before GenAI - academic accountability is alive and kicking."*



**Name:** Julie Mundair, Senior Teaching Fellow in Marketing, University of Greenwich

**Lens:** Curiosity

**Provocation:** *"Are we designing modules for the way students learn today, or the way we taught yesterday? Students are already living in digital-rich environments... are we teaching them how to think with it?"*



**Name:** Rhonda Best, Teaching Fellow in Business and Management & Executive Education, University of Greenwich

**Lens:** Curiosity

**Provocation:** *“Are we designing modules for the way students learn today, or the way we taught yesterday? Students are already living in digital-rich environments... are we teaching them how to think with it?”*



**Name:** Simon Goldsmith, Head of Strategic Sustainability, University of Greenwich

**Lens:** Regeneration

**Provocation:** *“Business as usual is killing us and life-supporting natural systems. If we’re to survive and thrive, we need to recalibrate thinking and action beyond sustainable to regenerative.”*

## Afternoon session (14:00 - 18:00)



**Name:** Dr Klairong Hawa Phairor, Deputy Head of the School of Management & Marketing, University of Greenwich

**Lens:** Paradox

**Provocation:** *“How can we harness the paradox of AI in higher education and its potential to support regenerative learning? - seeing AI as a catalyst for deeper critical, ethical and creative engagement.”*



**Name:** Gary Thistlewaite, Apprenticeships Skills Coach, University of Greenwich

**Lens:** Paradox

**Provocation:** *“Step into the student experience and confront the reality: the world of work has changed. Has our curriculum?”*



**Name:** Lynette Lisk, Generator Programmes Manager, University of Greenwich

**Lens:** Paradox

**Provocation:** *“Step into the student experience and confront the reality: the world of work has changed. Has our curriculum?”*



**Name:** Nevin Bayoumi-Stefanovic, Senior Teaching Fellow in Personal & Professional Development, University of Greenwich

**Lens:** Curiosity

**Provocation:** *“How can we create learning environments where the most dangerous questions are the ones we are currently afraid to ask? Through the lens of curiosity, I'd like us to consider which these are, and why.”*



**Name:** Katherine Leopold, Faculty Employability Lead Tutor, Senior Teaching Fellow in Employability, University of Greenwich

**Lens:** Curiosity

**Provocation:** *“What if the challenge for graduate employment is not that students lack networks or cultural capital, but that their networks and capital are not considered good enough as classified by the business elites?”*



**Name:** Raluca Marinciu, Senior Teaching Fellow in Business Management, University of Greenwich

**Lens:** Regeneration

**Provocation:** *“The support exists. The staff care. So why do some students never show up?”*

# Venue and contacts

## Venue

Old Brewery Hall, University of Greenwich

## Tickets

Please scan the QR code below to find out more about the event and to register.



## Contact

Email: [LTFCommittee@greenwich.ac.uk](mailto:LTFCommittee@greenwich.ac.uk)



***“Are you ready to question what is known? To imagine what comes next? We are listening.”***

## **Learning & Teaching Festival 2026**

**Greenwich Business School**

 [grebusiness](https://www.instagram.com/grebusiness)

 [greenwich-business-school](https://www.linkedin.com/company/greenwich-business-school)

[www.gre.ac.uk/bus](http://www.gre.ac.uk/bus)



**UNIVERSITY OF  
GREENWICH**

Greenwich Business  
School